



Temperature increase reduces global yields of major crops in four independent estimates

Chuang Zhao^{a,1}, Bing Liu^{b,c,d,e,f,1}, Shilong Piao^{a,g,h,2}, Xuhui Wang^a, David B. Lobellⁱ, Yao Huang^j, Mengtian Huang^a, Yitong Yao^a, Simona Bassu^k, Philippe Ciais^l, Jean-Louis Durand^m, Joshua Elliott^{n,o}, Frank Ewert^{p,q}, Ivan A. Janssens^r, Tao Li^s, Erda Lin^t, Qiang Liu^a, Pierre Martre^u, Christoph Müller^v, Shushi Peng^a, Josep Peñuelas^{w,x}, Alex C. Ruane^{y,o}, Daniel Wallach^z, Tao Wang^{g,h}, Donghai Wu^a, Zhuo Liu^a, Yan Zhu^{b,c,d,e}, Zaichun Zhu^a, and Senthil Asseng^{f,2}

^aSino-French Institute for Earth System Science, College of Urban and Environmental Sciences, Peking University, Beijing 100871, China; ^bNational Engineering and Technology Center for Information Agriculture, Nanjing Agricultural University, Nanjing, Jiangsu 210095, China; ^cKey Laboratory for Crop System Analysis and Decision Making, Ministry of Agriculture, Nanjing Agricultural University, Nanjing, Jiangsu 210095; ^dJiangsu Key Laboratory for Information Agriculture, Nanjing Agricultural University, Nanjing, Jiangsu 210095; ^eJiangsu Collaborative Innovation Center for Modern Crop Production, Nanjing Agricultural University, Nanjing, Jiangsu 210095; ^fAgricultural and Biological Engineering Department, University of Florida, Gainesville, FL 32611; ^gKey Laboratory of Alpine Ecology and Biodiversity, Institute of Tibetan Plateau Research, Chinese Academy of Sciences, Beijing 100085, China; ^hCenter for Excellence in Tibetan Earth Science, Chinese Academy of Sciences, Beijing 100085, China; ⁱDepartment of Earth System Science Center on Food Security and the Environment, Stanford University, Stanford, CA 94305; ^jState Key Laboratory of Vegetation and Environmental Change, Institute of Botany, Chinese Academy of Sciences, Beijing 100093, China; ^kDesertification Research Centre, University of Sassari, 07100 Sassari, Italy; ^lLaboratoire des Sciences du Climat et de l'Environnement, Le Commissariat à l'Énergie Atomique et aux Énergies Alternatives, CNRS, Université de Versailles Saint-Quentin, Gif-sur-Yvette 91191, France; ^mUnité de Recherche Pluridisciplinaire Prairies et Plantes Fourragères, Institut National de la Recherche Agronomique, CS 80006, 86600 Lusignan, France; ⁿUniversity of Chicago Computation Institute, University of Chicago, Chicago, IL 60637; ^oColumbia University Center for Climate Systems Research, Columbia University, New York, NY 10025; ^pInstitute of Crop Science and Resource Conservation, University of Bonn, Bonn 53115, Germany; ^qLeibniz Centre for Agricultural Landscape Research, 15374 Müncheberg, Germany; ^rDepartment of Biology, University of Antwerp, 2610 Wilrijk, Belgium; ^sInternational Rice Research Institute, Los Baños, 4031 Laguna, Philippines; ^tAgro-Environment and Sustainable Development Institute, Chinese Academy of Agricultural Sciences, Beijing 100081, China; ^uUMR Laboratoire d'Ecophysiologie des Plantes sous Stress Environnementaux, Institut National de la Recherche Agronomique, Montpellier SupAgro, 34060 Montpellier, France; ^vClimate Impacts and Vulnerabilities, Potsdam Institute for Climate Impact Research, 14473 Potsdam, Germany; ^wCentre de Recerca Ecològica i Aplicacions Forestals, Cerdanyola del Valles, Barcelona 08193, Catalonia, Spain; ^xGlobal Ecology Unit CREA-CSIC-UAB, Consejo Superior de Investigaciones Científicas, Bellaterra, Barcelona 08193, Catalonia, Spain; ^yNational Aeronautics and Space Administration Goddard Institute for Space Studies, New York, NY 10025; and ^zUMR 1248 Agrosystèmes et Développement Territorial, Institut National de la Recherche Agronomique, 31326 Castanet-Tolosan Cedex, France

Edited by B. L. Turner, Arizona State University, Tempe, AZ, and approved July 10, 2017 (received for review January 31, 2017)

Wheat, rice, maize, and soybean provide two-thirds of human caloric intake. Assessing the impact of global temperature increase on production of these crops is therefore critical to maintaining global food supply, but different studies have yielded different results. Here, we investigated the impacts of temperature on yields of the four crops by compiling extensive published results from four analytical methods: global grid-based and local point-based models, statistical regressions, and field-warming experiments. Results from the different methods consistently showed negative temperature impacts on crop yield at the global scale, generally underpinned by similar impacts at country and site scales. Without CO₂ fertilization, effective adaptation, and genetic improvement, each degree-Celsius increase in global mean temperature would, on average, reduce global yields of wheat by 6.0%, rice by 3.2%, maize by 7.4%, and soybean by 3.1%. Results are highly heterogeneous across crops and geographical areas, with some positive impact estimates. Multimethod analyses improved the confidence in assessments of future climate impacts on global major crops and suggest crop- and region-specific adaptation strategies to ensure food security for an increasing world population.

climate change impact | global food security | major food crops | temperature increase | yield

Crops are sensitive to climate change, including changes in temperature and precipitation, and to rising atmospheric CO₂ concentration (1, 2). Among the changes, temperature increase has the most likely negative impact on crop yields (3, 4), and regional temperature changes can be projected from climate models with more certainty than precipitation. Meteorological records show that mean annual temperatures over areas where wheat, rice, maize, and soybean are grown have increased by ~1 °C during the last century (Fig. 1A) and are expected to continue to increase over the next century (Fig. 1B)—more so if greenhouse gas emissions continue to increase. It is thus necessary to quantify the impact of temperature increase on global crop yields, including any spatial variations, to first assess the risk to world food security, and then to develop targeted adaptive strategies to feed a burgeoning world population (5).

Several methods have been developed to assess the impact of temperature increase on crop yields (6). Process-based crop models characterize crop growth and development in daily time steps and can be used to simulate the temperature response of yield either in areas around the globe defined by grids or at selected field sites or points (1, 7). A third method, statistical modeling, uses observed regional yields and historical weather records to fit regression functions to predict crop responses (8, 9). A fourth method is to artificially warm crops under near-natural field conditions to directly measure the impact of increased

Significance

Agricultural production is vulnerable to climate change. Understanding climate change, especially the temperature impacts, is critical if policymakers, agriculturalists, and crop breeders are to ensure global food security. Our study, by compiling extensive published results from four analytical methods, shows that independent methods consistently estimated negative temperature impacts on yields of four major crops at the global scale, generally underpinned by similar impacts at country and site scales. Multimethod analyses improved the confidence in assessments of future climate impacts on global major crops, with important implications for developing crop- and region-specific adaptation strategies to ensure future food supply of an increasing world population.

Author contributions: C.Z., B.L., S. Piao, D.B.L., F.E., and S.A. designed research; C.Z. and B.L. performed research and analyzed data; C.Z., B.L., S. Piao, D.B.L., and S.A. wrote the paper; and X.W., D.B.L., Y.H., M.H., Y.Y., S.B., P.C., J.-L.D., J.E., F.E., I.A.J., T.L., E.L., Q.L., P.M., C.M., S. Peng, J.P., A.C.R., D. Wallach, T.W., D. Wu, Z.L., Y.Z., and Z.Z. contributed to the interpretation of the results and to the text.

The authors declare no conflict of interest.

This article is a PNAS Direct Submission.

¹C.Z. and B.L. contributed equally to this work.

²To whom correspondence may be addressed. Email: sasseng@ufl.edu or slpiao@pku.edu.cn.

This article contains supporting information online at www.pnas.org/lookup/suppl/doi:10.1073/pnas.1701762114/-DCSupplemental.

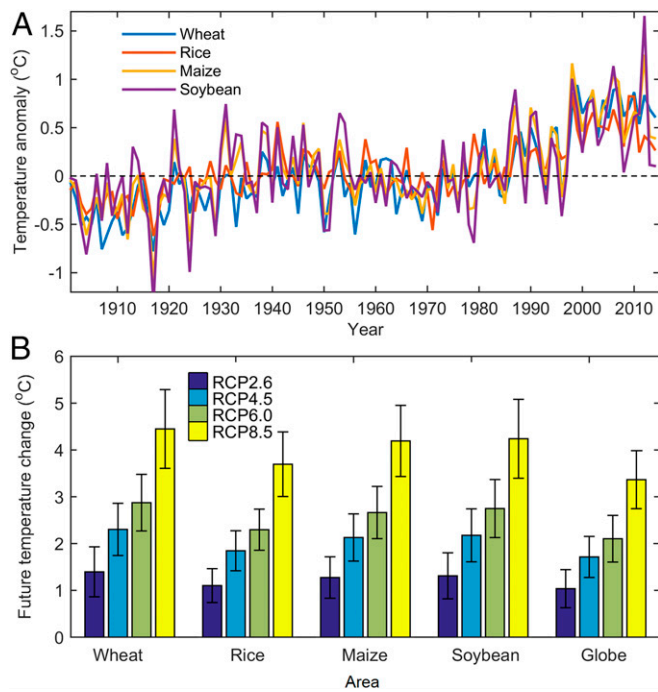


Fig. 1. Mean annual temperature changes over time. (A) Historically observed temperature anomalies relative to 1961–1990 for global growing areas of four individual crops. (B) Future projected temperature changes (2071–2100 in comparison with 1981–2010 baseline) of four crop-growing areas and the globe (land and sea surface) under four representative concentration pathway (RCP) scenarios of increasing greenhouse gas concentrations. Error bars represent SDs in the climate model results.

temperatures (4). Here, we combine these four methods, which use disparate data sources, time spans, and upscaling approaches (10), to assess the impact of increasing temperatures on yields of wheat, rice, maize, and soybean. Grid- and point-based simulations from recent international model intercomparison exercises (2, 7, 11, 12) and published results of 13 statistical regression studies and 54 field-warming experiments (*SI Appendix*, Fig. S1) are synthesized (*Materials and Methods*).

Results and Discussion

Fig. 2A illustrates the impact of temperature on yields of the four crops at the global scale. The loss in yield for each degree Celsius increase in global mean temperature is largest for maize (with multimethod average ± 2 SE) of $-7.4 \pm 4.5\%$ per degree Celsius. All four methods predict a negative impact for maize, but with varying magnitudes. Mostly the different methods generated similar results at the country scale (Fig. 3C and *SI Appendix*, Figs. S2 and S3), but estimates varied between countries. The impact estimates are consistently negative for four major maize producers, together responsible for two-thirds of global maize production—namely, the United States ($-10.3 \pm 5.4\%$ per degree Celsius), China ($-8.0 \pm 6.1\%$ per degree Celsius), Brazil ($-5.5 \pm 4.5\%$ per degree Celsius), and India ($-5.2 \pm 4.5\%$ per degree Celsius). The estimated impact on maize crops in France, however, is smaller ($-2.6 \pm 6.9\%$ per degree Celsius), including a small positive estimate ($3.8 \pm 5.2\%$ per degree Celsius) from statistical modeling (13).

For wheat, the average estimate from all four methods is a $6.0 \pm 2.9\%$ loss in global yield with each degree-Celsius increase in temperature (Fig. 2A). Results from the four methods agree more closely on the impact on wheat (-7.8 to -4.1% per degree Celsius) than on maize yields (Fig. 2A). The results from different methods are also generally consistent for the top five wheat-producing countries (Fig. 3A) that harvest $>50\%$ of the world's wheat. Spatially, however, the impacts are highly

heterogeneous. Estimated wheat yield losses for the United States ($-5.5 \pm 4.4\%$ per degree Celsius) and France ($-6.0 \pm 4.2\%$ per degree Celsius) are similar to the global average, while those for India ($-9.1 \pm 5.4\%$ per degree Celsius) and Russia ($-7.8 \pm 6.3\%$ per degree Celsius) are more vulnerable to temperature increase. The large yield reductions for Russia are mainly due to the contribution of a markedly higher negative result from the statistical method ($-14.7 \pm 3.8\%$ per degree Celsius; Fig. 3A), which did not account for in-season variations in temperature impact (10). By contrast, for China, the largest wheat producer in the world, the multimethod estimate indicates that only $2.6 \pm 3.1\%$ of yield would be lost for each degree-Celsius increase in global mean temperature.

Rice is a main source of calories in developing countries. The analysis from the multimethod ensemble indicates that a global increase in temperature of 1°C will reduce global rice yield by an average of $3.2 \pm 3.7\%$, much less than for maize and wheat (Fig. 2A). Grid- and point-based simulations and field-warming experiments indicate a negative impact of temperature of approximately -6.0% per degree Celsius, but some statistical regressions suggest almost no impact. Similar disparities in estimates between the statistical regressions and other methods are found for several major rice-producing countries (Fig. 3B),

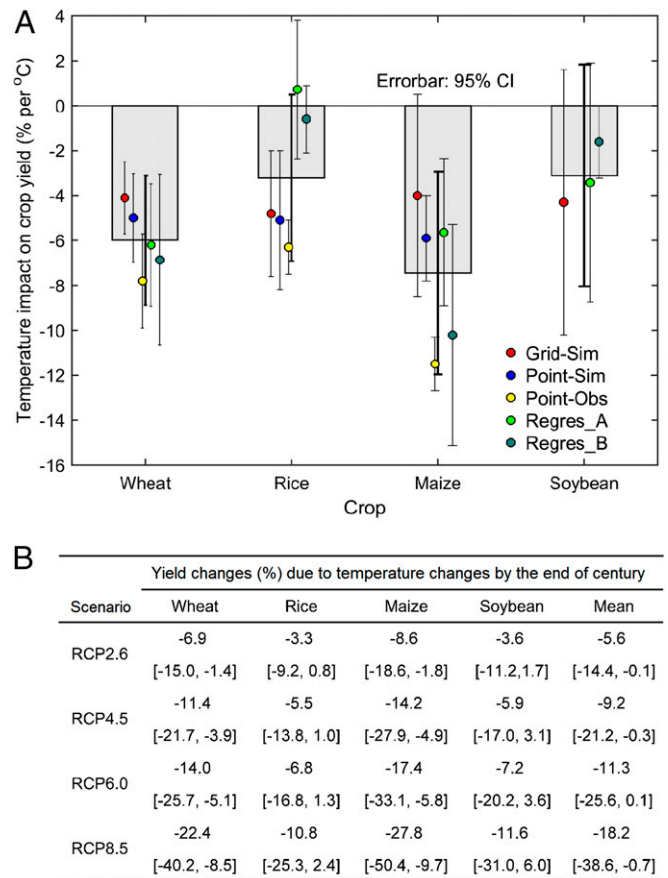


Fig. 2. Multimethod estimates of global crop yield changes in response to temperature increase. (A) Impacts on crop yields of a 1°C increase in global temperature in grid-based simulations (Grid-Sim), point-based simulations (Point-Sim), field-warming experiments (Point-Obs), and statistical regressions at the country level (Regres_A) and the global level (Regres_B). Circles, means of estimates from each method or medians for Grid- and Point-Sim. Filled bars, means of the multimethod ensemble. Error bars show 95% CIs for individual methods (gray lines) and the ensemble of methods (black lines). (B) Projected changes in yield due to temperature changes by the end of the 21st century. CIs of 95% are given in square brackets.

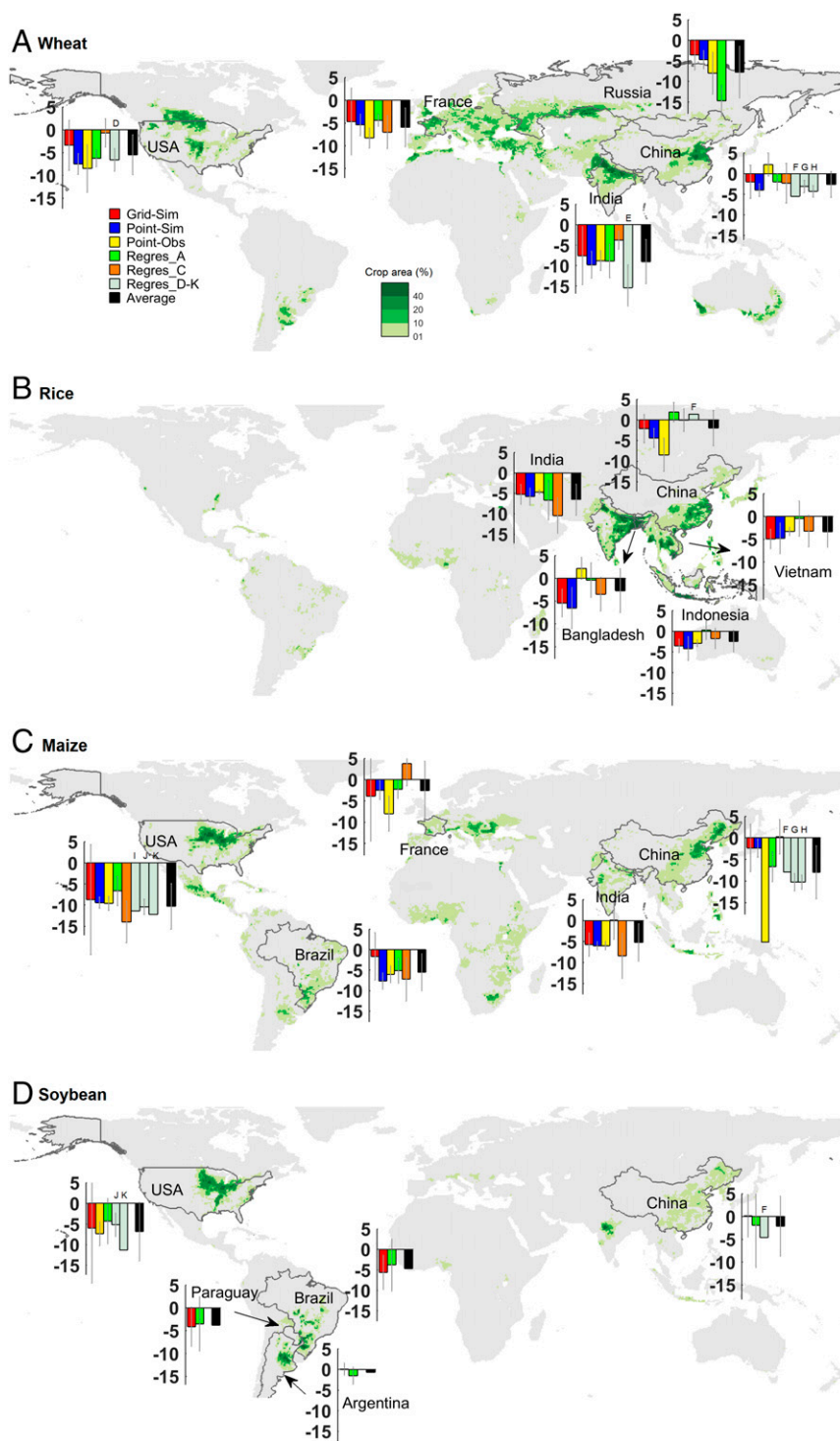


Fig. 3. Multimethod estimates of grain yield changes with a 1 °C increase in global temperature for the five major countries producing each crop. (A) Wheat. (B) Rice. (C) Maize. (D) Soybean. Grid-Sim, Point-Sim, Point-Obs, and Regres_A are grid-based simulations, point-based simulations, field-warming experiments, and statistical regressions at the country level (Regres_A) (9), respectively. Regres_C is another regression method used at the country scale (13). Regres_D–K represents various country-level regression analyses used for specific crops or countries shown by individual labels D–K above the bars. Vertical axes show the temperature impact on crop yield in percent per degree Celsius increase. Error bars are 95% CIs. Values for error margins are not available for point-based observations for maize in China.

including China, which produces ~30% of the world’s rice (14). Similar regression methods produce quite different estimates for Indonesia, Bangladesh, and Vietnam, which, when averaged across all methods, lead to small estimated impacts on rice production for each country. For India, however, estimates from all methods predict large temperature impacts, with a multimethod average of $-6.6 \pm 3.8\%$ per degree Celsius.

Soybean is the fourth most important commodity crop (14). Results of just three studies using only two methods are available for global-scale estimates of the impacts of temperature on soybean yield. The global average reduction in soybean yield is 3.1%

per degree-Celsius rise (Fig. 24), but the estimates are not statistically significant due to large uncertainties in each method (the 95% CIs go through zero). Similar effects are estimated with both methods for the United States, Brazil, Argentina, and Paraguay (Fig. 3D), which produce 84% of the global soybean harvest (14). The largest expected reduction is $-6.8 \pm 7.1\%$ per degree Celsius for the United States, the largest soybean producer. The overall results for China, the fourth largest producer, however, do not indicate statistically significant effects of temperature on soybean yield.

We compared different methods for a total of 10 sites and found that method estimates are similar for most site–crop combinations

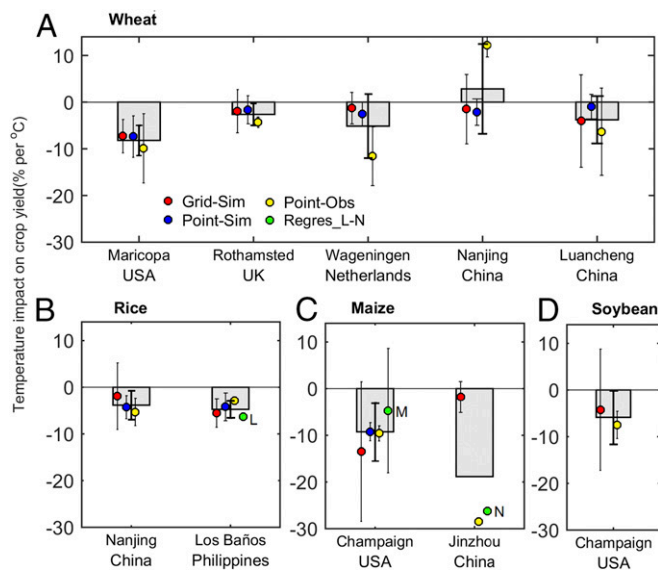


Fig. 4. Site-based multimethod ensemble of crop yield changes with 1 °C of global temperature increase. Site estimates from more than three methods are shown for wheat (A), rice (B), and maize (C) or from two methods for soybean (D). Grid-Sim, Point-Sim, and Point-Obs are grid-based simulations, point-based simulations, and field-warming experiments, respectively. Regres_L-N are site-, county- or city-scale regression analyses for specific crops shown by labels L-N next to the mean of the plotted dataset. Error bars are 95% CIs. Error bars for the Jinzhou (China) results for regression L and N were not available.

(Fig. 4). Estimates from grid- and point-based simulations are more similar to each other than to field-warming observations (Fig. 4 and *SI Appendix*, Fig. S4). This is not unexpected, as the two types of simulation have some methodological similarities, such as model structure, assumptions, and parameters. The grid- and point-based models both tend to project greater yield loss with increasing temperature at warmer locations and less yield loss at cooler locations, a distinction not identified in the field experiments (*SI Appendix*, Fig. S4).

Some of the impact differences between simulations and field experiments could be due to the fact that field experiments were only carried out over a few years and might not represent the entire variability of climate at this location, while the simulations represent 30 y. Simulation parameters are also based on the properties of cultivars that differ from those grown in field experiments. For example, the field experiment in Wageningen (The Netherlands) indicated a large negative impact of temperature rise on wheat yield (−11.6% per degree Celsius), but used a spring wheat that is not representative of the region (15). Positive impacts (11.2 ± 1.2% per degree Celsius) were observed in wheat-warming experiments in Nanjing, China, where rising temperatures reduce damage from frost and heat stress during the early and late experimental wheat growing seasons, respectively (16)—factors that are captured less well in crop models (17). For maize grown in Jinzhou (China), a field experiment and a regression analysis produced very large negative estimates of impact, but were not accompanied by margins of error to aid interpretation.

We assumed the temperature response of impact on yield would be linear and multiplied projected temperature changes (Fig. 1B) with our multimethod impact estimates to give an average projected decrease in the global crop yields of 5.6% (95% CI, 0.1–14.4%) due to temperature change alone under the scenario of lowest emissions (RCP2.6) going up to 18.2% (95% CI, 0.7–38.6%) under the scenario of highest emissions (RCP8.5) (Fig. 2B). The estimated responses in yield are primarily from approximately +2 °C warming simulations, regressions, and experiments (*Materials and Methods*), so the estimates of impact for

a global warming scenario near +4 °C (RCP8.5) are likely to be conservative due to the nonlinear impact of rising temperatures in the real world (4, 18). A nonlinear response to temperature has also been suggested in simulations (1, 7, 10).

To prepare for adaptation to climate change, it is necessary to isolate the effects of individual factor for possible impacts on yield, as changes in different factors usually require different adaptation strategies. While elevated atmospheric CO₂ concentration can stimulate growth when nutrients are not limited, it will also increase canopy temperature from more closed stomata (19). Also, changes in precipitation can have an effect on crops, but projections on precipitation change are often uncertain. The focus of our study is on temperature change, one of the most direct negative impacts from climate change on crops, and does not include other possible climate change effects from elevated atmospheric CO₂ concentration or changes in rainfall, and possible deliberate adaptation taken by farmers. Farmers have increased yields through adapting new technologies during the last half-century, but yield has been also lost through increases in temperatures already (9). Yield increase has slowed down or even stagnated during the last years in some parts of the world (20, 21), and further increases in temperature will continue to suppress yields, despite farmers' adaptation efforts.

The direct negative temperature impact on yield could be additionally affected via indirect temperature impacts. For instance, increasing temperature will increase atmospheric water demand, which could lead to additional water stress from increased water pressure deficits, subsequently reducing soil moisture and decreasing yield (22, 23). However, an accelerated phenology from increased temperatures leads to a shorter growing period and less days of crop water use within a cropping season. Such indirect temperature effects are taken into account in each of the methods, but are not explicitly quantified. Other indirect temperature impacts include more frequent heat waves and possible temperature impact on weeds, pests, and diseases (18, 24–26). Increases in management intensity and yield potential could also unintentionally increase yield sensitivity to weather (27).

By combining four different methods, our comprehensive assessment of the impacts of increasing temperatures on major global crops shows substantial risks for agricultural production, already stagnating in some parts of the world (20, 21). However, differences in temperature responses of crops around the world suggest that some mitigation could be possible to substantially affect the magnitude (or even direction) of climate change impacts on agriculture. These impacts will also vary substantially for crops and regions, and may interact with changes in precipitation and atmospheric CO₂, so a reinvigoration of national research and extension programs is urgently needed to offset future impacts of climate change, including temperature increase on agriculture by using crop- and region-specific adaptation strategies.

Materials and Methods

Temperature Data. Historical observed gridded monthly temperature data are from the Climate Research Unit (0.5° × 0.5° grid, CRU TS 3.23; <https://crudata.uea.ac.uk/cru/data/temperature/>). Future predicted temperature data are from the Coupled Model Intercomparison Project Phase 5 (CMIP5) Earth System Models (ESMs) outputs (1.0° × 1.0° grids; cmip-pcmdi.llnl.gov/cmip5) used in the Intergovernmental Panel on Climate Change (IPCC) Assessment Report 5 (28). According to data availability, the outputs from 15, 20, 11, and 22 ESMs were included in this study for RCP2.6, RCP4.5, RCP6.0, and RCP8.5 scenarios, respectively. However, the calculated temperature changes are very similar to those calculated by using all of the ESMs (IPCC 5). The annual mean temperature over the global growing area of an individual crop was calculated by weighting each grid cell average (0.5° × 0.5° grids) according to the crop growing area within the grid cell (29).

Global Gridded Crop Model Simulations. The Agricultural Model Intercomparison and Improvement Project (AgMIP) (30) and Inter-Sectoral Impact Model Intercomparison Project 1 (31) initiated a fast-track global climate impact assessment for the main global crops in 2012, including wheat, rice, maize, and soybean. Seven global gridded crop models were used to simulate crop yield in 0.5° × 0.5° grid cells over the globe, forced with climate reconstruction for

1980–2099 based on HadGEM2-ES (32) derived from CMIP5. The simulations were carried out under a scenario of constant CO₂ concentration (380 ppm in 2000) and full irrigation, to exclude the possibility of covariance with CO₂ and precipitation. More detailed information about the simulations can be found in refs. 1 and 33. Temperature impact values were calculated from yield changes between 2029 and 2058 (+2 °C of global mean temperature) and 1981–2010 (baseline), which were then halved to give +1 °C of global temperature impact. For global or country results, all of the grids were averaged by weighting the corresponding growing area of each crop (29).

Point-Based Ensemble Simulations. The AgMIP (30) also conducted crop yield simulations at 30, 4, and 4 representative sites around the world (*SI Appendix, Fig. S1*) by using 30 wheat, 13 rice, and 19 maize models, respectively. For wheat, a scenario of +2 °C was created by adjusting each day's temperature by +2 °C relative to the baseline (1981–2010), with other factors being constant. For rice and maize, the +3 °C scenarios were used. Model details about simulations for each crop can be found in refs. 7, 11, and 12. The temperature impact was calculated as the yield change during the warming period relative to the yield during the baseline period normalized to +1 °C impact, assuming the impact showed a linear temperature response. To obtain values for impacts at the country scale, each country was deemed to be similar to one or more representative sites located in said (or nearby) country. As local temperature change can be different from the country mean, the local point-based estimates were scaled up by multiplying each country's temperature factor produced by HagGEM2-ES (28), as in ref. 7. The weighted average temperature impacts over all of the countries were used to estimate the global scale impact, weighted by country-level production (14). It should be noted that the results from only four sites were used to represent all of the rice-/maize-producing countries, which might not encompass all of the uncertainties from diverse production systems and is also one limitation in our analysis. No point-based model-ensemble simulations for soybean were conducted in AgMIP.

Field-Warming Experiments. We started with all published peer-reviewed studies that applied artificial warming treatments on field crops. To avoid short-term noise, we only selected studies of crops that received all-day warming treatments for >2 mo. Results from laboratory incubators or controlled environments with constant day–night temperature treatment (e.g., 37/29 °C vs. 29/21 °C) were excluded. The studies with temperature change (ΔT) unequal to +1 °C were adjusted to +1 °C impact by dividing the impact value by ΔT , which assumed a linear relationship between impacts and ΔT . The studies that produced temperature impacts of >50% per °C were deemed as outliers and excluded. A total of 46 published studies (available from the corresponding author upon request) and 48 sites (*SI Appendix, Fig. S1*) were therefore included in the following analysis. Most of the sites (41 of 48) had a warming magnitude of 1.5–3.0 °C, similar to the grid- and point-based simulations. The upscaling methods from site to country to global scale are the same as for the point-based model simulations.

Statistical Regressions. Statistical models used regression equations to link historical year-to-year variations in yield to variations in selected climate variables. Different detrending methods were applied in the model to remove the influence of adaptation measures, such as crop management. In the statistical regression studies used here, the global-level results of regressions A and B (Fig. 2A) used detrending methods with the inclusion of a quadratic time trend and first differences, respectively, and resulted in more similar temperature impacts than grid- or point-based simulations. A similar result was found for the country-level regressions A and C (the country-level results are in Fig. 3), which used detrending methods with inclusion of a quadratic time trend and first-differences method, respectively. The results from statistical models were from 13 published studies (available from the corresponding author upon request). The interannual fluctuation in temperature over the globe is ~2 °C (8), similar to the warming magnitude used in other methods. To ensure comparability of results, reported values under local temperature changes were normalized to global surface temperature changes by multiplying the corresponding temperature factor produced by HagGEM2-ES (28).

Multimethod Ensemble. The above four methods constituted the method ensemble that we used to estimate multimethod means and uncertainties. In this study, values from the method ensembles were synthesized at site, country, and global scales. At the country scale, the temperature impacts from regression methods were only reported for the five countries producing each crop; thus, the results mainly focus on the relevant top five countries. The uncertainty for the method ensemble was calculated by using a formula: $\text{var}(Y) = \text{var}(E(Y|\text{method})) + E(\text{var}(Y|\text{method}))$, where the term $\text{var}(E(Y|\text{method}))$ is a measure of the variability between methods, and $E(\text{var}(Y|\text{method}))$ is a measure of the average variability within methods, assuming that this is random sample of approaches from a population of approaches. Confidence intervals (CIs) at 95% were calculated for the multimethod mean as: 95% CI = mean of methods $\pm 1.96 \times \sqrt{\text{var}(Y)}$.

Comparisons Between Methods. A recent study by Liu et al. (2016) (10) compared the temperature impacts on wheat yield estimated by three different methods. We extended the analyses by including a large number of datasets from site-based observations (field-warming experiments) and comparing estimated impacts on yields of wheat, rice, maize, and soybean—the four most important staple crops for humans. At the country scale, different methods were compared across countries. For the regression method, the results were only reported for the five major countries producing each crop, and thus the comparisons only focused on the relevant five countries. At the site scale, grid-based simulations were compared with site-based simulations and field-warming experiments. Grids containing sites of point-based simulations or warming experiments were selected. The comparisons include absolute yield under different temperature scenarios and relative temperature impacts. The baseline and temperature period for each grid was determined when the rolling 30-y annual mean temperature was equal to the baseline and increased temperatures used for point-based simulations and experiments. The temperature impact was calculated as the yield changes relative to the baseline and then adjusted to a +1 °C global temperature impact.

Prediction of Yield Changes by the End of Century. The yield change by the end of century was calculated as the products of the ensemble estimated yield response and projections of global temperature rise from CMIP5. As the yield response (Fig. 2A) and predicted temperature change (Fig. 1B) both have uncertainties, a bootstrap resampling approach was used to obtain the predicted yield change and its uncertainty. At each instance of bootstrap resampling, one pair of values for yield response and temperature change was sampled, respectively, from their original data to calculate the predicted yield change; this procedure assumes the chosen value is a random sample from a population of values. Repeating the above process 5,000 times gave 5,000 values of predicted yield change, which constitute a new distribution of the predicted yield change. The 2.5th–97.5th percentile was deemed as the boundaries of uncertainty for the predicted yield change.

ACKNOWLEDGMENTS. This study was supported by National Natural Science Foundation of China Grants 41530528 and 41561134016; 111 Project Grant B14001; and the National Youth Top-Notch Talent Support Program in China. We thank the Agricultural Model Intercomparison and Improvement Project (AgMIP). S.A. was supported by the Consultative Group on International Agricultural Research (CGIAR) Research Program on Climate Change, Agriculture and Food Security, and the CGIAR Research Program on Wheat and the Wheat Initiative. B.L. and Y.Z. were supported by National High-Tech Research and Development Program of China Grant 2013AA102404, the 111 Project Grant B16026 and the Priority Academic Program Development of Jiangsu Higher Education Institutions. C.M. was supported by MACMIT (climate mitigation in agricultural production systems through sustainable resource management) Project Grant 01LN1317A, funded through the German Federal Ministry of Education and Research. P.C., I.A.J., and J.P. were supported by European Research Council Synergy Grant ERC-SyG-2013-610028 IMBALANCE-P. P.C. was also supported from the French Agence Nationale de la Recherche (ANR) Convergence Lab Changement climatique et usage des terres (CLAND). F.E. was supported by German Science Foundation Project EW 119/5-1 and by the Joint Programming Initiative for Agriculture, Climate Change, and Food Security Modelling European Agriculture with Climate Change for Food Security Project through German Federal Ministry of Food and Agriculture Grant 2815ERA01J.

- Rosenzweig C, et al. (2014) Assessing agricultural risks of climate change in the 21st century in a global gridded crop model intercomparison. *Proc Natl Acad Sci USA* 111: 3268–3273.
- Wheeler T, von Braun J (2013) Climate change impacts on global food security. *Science* 341:508–513.

- Porter JR, Gawth M (1999) Temperatures and the growth and development of wheat: A review. *Eur J Agron* 10:23–36.
- Ottman MJ, Kimball BA, White JW, Wall GW (2012) Wheat growth response to increased temperature from varied planting dates and supplemental infrared heating. *Agron J* 104:7–16.

5. Nelson GC, et al. (2010) *Food Security, Farming, and Climate Change to 2050: Scenarios, Results, Policy Options*, IFPRI Research Monograph (International Food Policy Research Institute, Washington, DC).
6. Zhao C, et al. (2016) Plausible rice yield losses under future climate warming. *Nat Plants* 3:16202.
7. Asseng S, et al. (2015) Rising temperatures reduce global wheat production. *Nat Clim Chang* 5:143–147.
8. Lobell DB, Field CB (2007) Global scale climate-crop yield relationships and the impacts of recent warming. *Environ Res Lett* 2:1–7.
9. Lobell DB, Schlenker W, Costa-Roberts J (2011) Climate trends and global crop production since 1980. *Science* 333:616–620.
10. Liu B, et al. (2016) Similar estimates of temperature impacts on global wheat yield by three independent methods. *Nat Clim Chang* 6:1130–1136.
11. Li T, et al. (2015) Uncertainties in predicting rice yield by current crop models under a wide range of climatic conditions. *Glob Change Biol* 21:1328–1341.
12. Bassu S, et al. (2014) How do various maize crop models vary in their responses to climate change factors? *Glob Change Biol* 20:2301–2320.
13. Lobell DB (2007) Changes in diurnal temperature range and national cereal yields. *Agric For Meteorol* 145:229–238.
14. Food and Agriculture Organization of the United Nations (2014) FAOSTAT. Available at www.fao.org/faostat/en/. Accessed August 16, 2016.
15. Van OM, Schapendonk AHCM, Jansen MJH, Pot CS, Maciorowski R (1999) Do open-top chambers overestimate the effects of rising CO₂ on plants? An analysis using spring wheat. *Glob Change Biol* 5:411–421.
16. Tian Y, et al. (2012) Warming impacts on winter wheat phenophase and grain yield under field conditions in Yangtze Delta Plain, China. *Field Crops Res* 134:193–199.
17. Ewert F, et al. (2015) Crop modelling for integrated assessment of risk to food production from climate change. *Environ Model Softw* 72:287–303.
18. Schlenker W, Roberts MJ (2009) Nonlinear temperature effects indicate severe damages to U.S. crop yields under climate change. *Proc Natl Acad Sci USA* 106:15594–15598.
19. Long SP, Ainsworth EA, Leakey AD, Nösberger J, Ort DR (2006) Food for thought: Lower-than-expected crop yield stimulation with rising CO₂ concentrations. *Science* 312:1918–1921.
20. Brisson N, et al. (2010) Why are wheat yields stagnating in Europe? A comprehensive data analysis for France. *Field Crops Res* 119:201–212.
21. Ray DK, Ramankutty N, Mueller ND, West PC, Foley JA (2012) Recent patterns of crop yield growth and stagnation. *Nat Commun* 3:1293.
22. Asseng S, Foster IAN, Turner NC (2011) The impact of temperature variability on wheat yield. *Glob Change Biol* 17:997–1012.
23. Zhao C, et al. (2016) Field warming experiments shed light on the wheat yield response to temperature in China. *Nat Commun* 7:13530.
24. Porter JR, et al. (2014) *Climate Change 2014: Impacts, Adaptation and Vulnerability: Contribution of Working Group II to the Fifth Assessment Report of the Intergovernmental Panel on Climate Change*, eds Field CB, et al. (Cambridge Univ. Press, Cambridge, UK).
25. Tack J, Barkley A, Nalley LL (2015) Effect of warming temperatures on US wheat yields. *Proc Natl Acad Sci USA* 112:6931–6936.
26. Lesk C, Rowhani P, Ramankutty N (2016) Influence of extreme weather disasters on global crop production. *Nature* 529:84–87.
27. Lobell DB, et al. (2014) Greater sensitivity to drought accompanies maize yield increase in the U.S. Midwest. *Science* 344:516–519.
28. Flato G, et al. (2013) *Climate Change 2013: The Physical Science Basis. Contribution of Working Group I to the Fifth Assessment Report of the Intergovernmental Panel on Climate Change*, eds Stocker TF, et al. (Cambridge Univ Press, Cambridge, UK), pp 741–882.
29. Chad M, Navin R, Foley JA (2008) Farming the planet: 2. Geographic distribution of crop areas, yields, physiological types, and net primary production in the year 2000. *Global Biogeochem Cycles* 22:89–102.
30. Rosenzweig C, et al. (2013) The agricultural model intercomparison and improvement project (AgMIP): Protocols and pilot studies. *Agric For Meteorol* 170:166–182.
31. Warszawski L, et al. (2014) The Inter-Sectoral Impact Model Intercomparison Project (ISI-MIP): Project framework. *Proc Natl Acad Sci USA* 111:3228–3232.
32. Hempel S, Frieler K, Warszawski L, Schewe J, Piontek F (2013) A trend-preserving bias correction—the ISI-MIP approach. *Earth Syst. Dynam.* 4:219–236.
33. Elliott J, et al. (2014) The Global Gridded Crop Model intercomparison: Data and modeling protocols for phase 1 (v1.0). *Geosci. Model Dev. Discuss.* 7: 4383–4427.